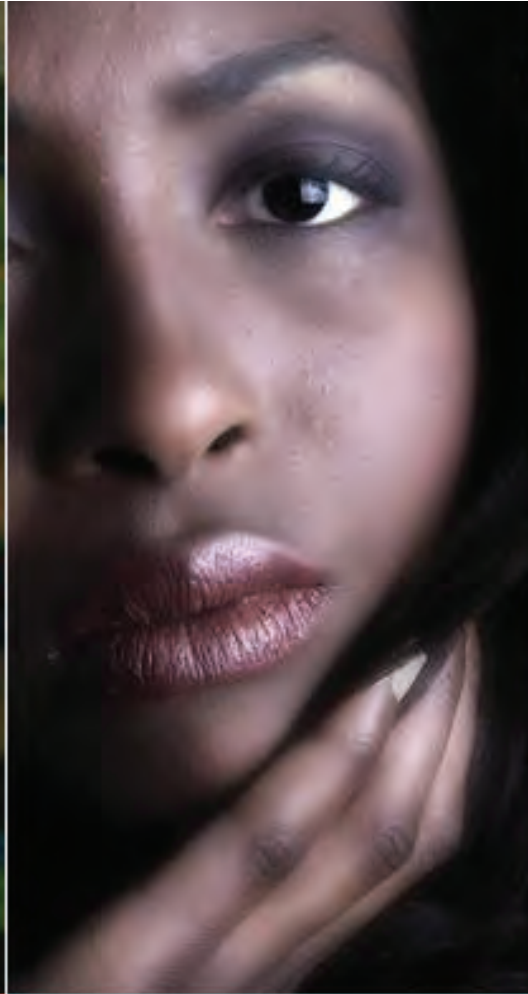




Expected End Ministries



HOPE

SAVE

HELP

IMPACTING LIVES, ONE AT A TIME...



TABLE OF CONTENTS

Introduction to Expected End Ministries	1
Our Operational Structure	2
Our Team	3
The Services We Provide	4
Expanded Services	5
Our Geographic Service Area	6
Our Financial Structure	7
Allocation of Funds Model	8
Current Needs	9 - 10
Capitalization	11
Our Clients	12
Community Impact	13
Cooperative Partnerships	14
Getting Started	15



INTRODUCTION TO EXPECTED END MINISTRIES

Expected End Ministries is a 501 C 3 non-profit operating as “Expected End Ministries Domestic Violence Safe House” whose primary services are provided to women and women with children who are victims of domestic violence. We provide shelter and a wide range of services that are intentionally designed to transition our Clients into independent living within a reasonably short period of time. Every one of our female Clients are unique and we customize our program offerings to each individual based on their circumstances and level of education.

The demand for what Expected End Ministries offers within the Charlotte and Mecklenburg County areas are substantially high and the purpose of this Business Profile is to introduce our non-profit to others. We are currently seeking funding sources and cooperative partnerships that are instrumental in our ability to provide the services and programs we offer to victims of domestic violence. Over the last 2 years Expected End Ministries has been of service to women and women with children who, without us, may not have been able to transition into independence in a timely manner.

Our non-profit is small however we have had an enormously positive impact on the Clients we have served and it is our intention to expand our operations so that we can serve more Clients and provide additional services. The work that Expected End Ministries does for our community is important and necessary. Thank you for taking the time to read this Business Profile and please feel free to contact us anytime.

Sincerely,

Ava Roseboro, Founder and CEO
Bobby Roseboro, Vice president
Expected End Ministries
3228 Wicklow Place
Charlotte, NC 28205
Phone: 704-535-1593
Email: eeministries88@gmail.com
Website: www.ExpectedEndCharlotte.com



OUR OPERATIONAL STRUCTURE



The model above represents the current operational structure of Expected End Ministries with a built-in flexibility for our natural evolution. As our non-profit grows to serve more Clients our infrastructure will change however the core of this model will remain constant.



Our Team

Currently Ava and Bobby Roseboro work full-time jobs and contribute a significant portion of their income to operating Expected End Ministries. Our non-profit depends on Volunteers who assist Ava and Bobby when needs arise. Our Team is small however our Volunteer base is growing because of our diligent efforts to form cooperative partnerships with other Ministries, Charities, Community Organizations and Program Facilitators.



Educators



**Program
Directors**



Volunteers



**Healthcare
Professionals**



Businesses



**Community
Leaders**



THE SERVICES WE PROVIDE



In addition to providing a safe shelter and food for women and women with children who are our Clients, Expected End Ministries custom designs "Service Delivery Programs" that are designed for each Client individually. The programs and services we currently offer our Clients are;

- One on One Counseling and Group Counseling Sessions
- G.E.D. Educational Courses with Formal Graduation
- Resume Writing Skills
- Interviewing Skills
- Job and Career Search Assistance
- Job Placement Assistance
- Financial Workshops
- Home Ownership Planning and Self Help Programs
- Beauty Tips and Make-overs
- Self-esteem Classes
- After-care and Follow-up Counseling
- Bible Study and Sunday Worship Services

Expected End Ministries refers to those we serve as "Clients" as it is our intention to give dignity to those we seek to encourage, assist and empower.



Expanded Services

Expected End Ministries would like to expand our educational, recreational and social programs by leasing or purchasing a larger facility that will allow us the privilege of serving more Clients in a structured yet comfortable environment. It is our intentions to offer the following expanded services sometime in the near future;

- ❶ Art and Social Interaction Classes
- ❶ Movie Night Co-sponsored by Our Cooperative Partner(s)
- ❶ Career Introduction Classes
- ❶ Substance Abuse Classes and Counseling
- ❶ Healthcare Clinics
- ❶ Reliable and Safe Transportation
- ❶ Specific Trade Skills Development in Cooperation with Our Cooperative Partners

Expected End Ministries will soon develop our Services and Programs to serve Clients who are not housed by us increasing our impact on people within our community. We are also considering the expansion into providing Halfway House transitional services for recently released females from city, county, state and federal correctional facilities.





Our Financial Structure

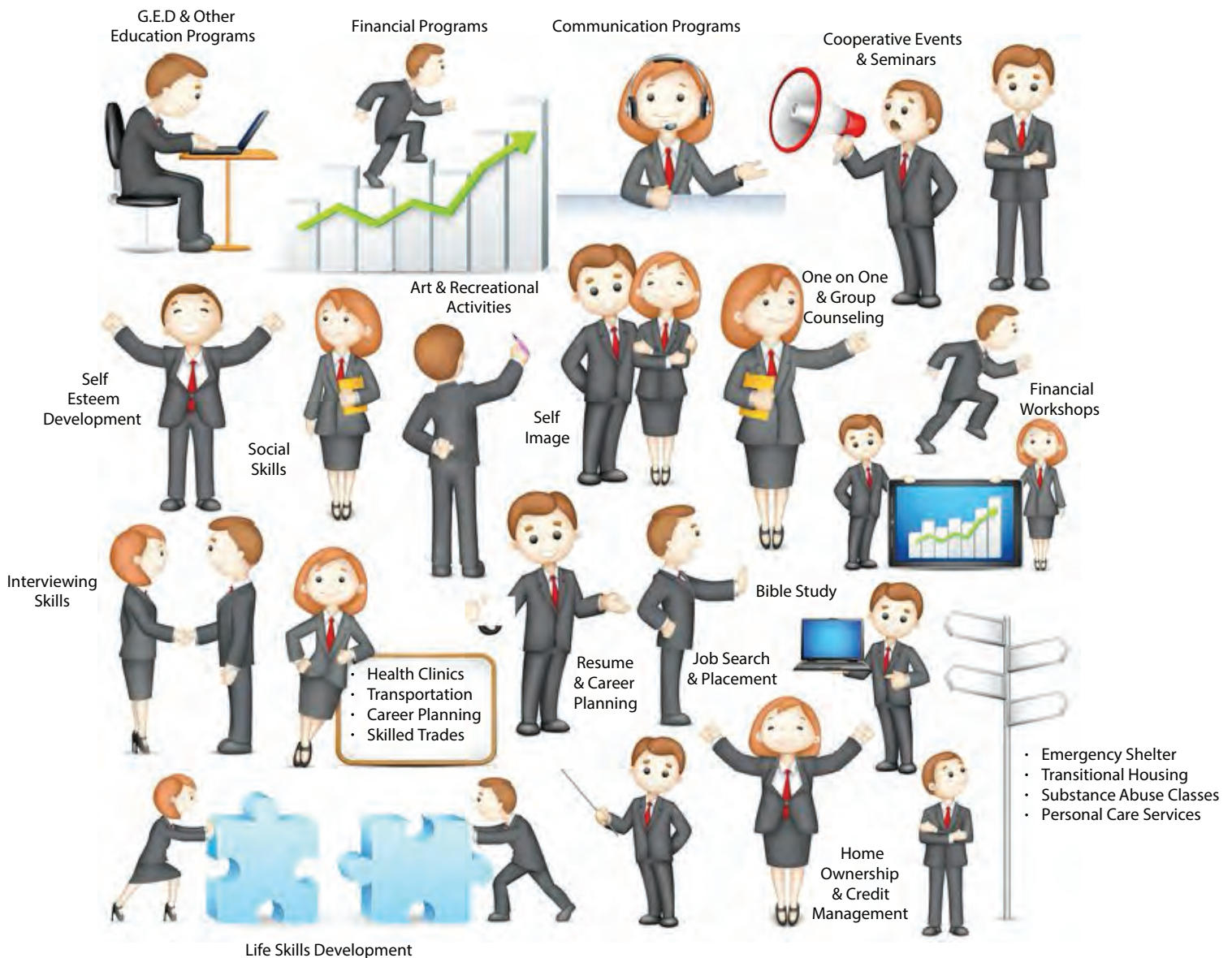


Expected End Ministries has 6 primary conduits for funding our non-profit initiatives and as we grow and expand our intentions are to enhance our efforts in each to stabilize our financial structure. Currently all financial resources are managed and allocated by the Founders with oversight by our CPA.



Allocation of Funds Model

The model below showcases the areas where Expected End Ministries does and soon will allocate funds with our focus being on shelter, food and stabilizing our Clients so that we can determine what programs will have the greatest positive impact in the short term. Our Team and Volunteers invests a great deal of time and energy in the identification of each of our Clients individual needs then we create a personalized game-plan for implementation.





Current Needs

Expected End Ministries requires monetary and material contributions and donations for the following 9 areas of immediate need.



Housing & Shelter



Food



Household Items



Transportation



Assessments



Program Planning



Healthcare



**Substance Abuse
Programs**



Transitional Housing



Current Needs

Once the first 9 needs are met, as outlined on page 9, Expected End Ministries allocates available monetary and material resources into the secondary 9 areas of need.



Educational Programs



Job Placement



Career Planning



Financial Workshops



Counseling



Self-esteem



Social Skills



Life Skills



Self-help



Capitalization

Our plans are to decrease Founder contributions and dedicate more time...

Founder Funding

We will apply for and receive program funding from agencies...

Program Funding

We will be implementing fund raising initiatives to raise capital for our use...

Fund Raising



Subsidies & Concessions

We will identify and seek all available resources for ongoing support...

Charitable Donations

We will seek to solicit more charitable donations in support of our work...

Charitable Contributions

We will also seek to solicit more charitable contributions in support of our work...

Expected End Ministries will use this document along with other collateral materials in cooperation with our solicitation efforts to capitalize our ongoing non-profit initiatives through 6 primary conduits of funding. We believe that a passionate appeal combined with the validity of the positive impact we are having on our Clients within our community “will” result in our ability to raise the capital we need. Our “good works” deserve recognition in the form of ongoing support by some of those we solicit for monetary and material support.



Our Clients

Ultimately the services provided to our mostly female Clients impacts the entire community in both direct and indirect ways. Expected End Ministries focuses on assisting females and females with children who are victims of domestic abuse however our outreach has no limits on those who we can help. As we expand our services we will evolve into serving others through our various programs. Also, even though we have a Christian foundation we provide both secular and non-secular services as we would never discriminate.





Community Impact

Expected End Ministries fully acknowledges that “every non-profit” is passionate about their positive impact on those they serve and the community as a whole however unless you see this impact it may become less of a focus for acknowledgment. Our work is instrumental in the ability of our Clients to build a life for themselves after leaving an abusive relationship and this transition can be one of the most difficult challenges ever faced by our Clients. In fact the barrier to freedom from abuse is usually in the difficulties in overcoming the challenges of “getting out” of an abusive situation.

As a passionate non-profit we serve our Community in the following direct and indirect ways;

- By providing a safe place for women and children...
- Being a conduit for resources and other services that may be unknown by our Clients...
- By providing educational and other programs designed to empower our Clients and that ensure the probability of them becoming productive citizens...
- In the assistance of transitioning into independent living, and in many cases, a reliable job or new career...
- Through cooperative relationships with social services, charities, community organizations and other entities as a resource for emergency solutions...
- By increasing the self-esteem of our Clients we are enriching others within our community and encouraging a “pay it forward” commitment by those we serve...





Cooperative Partnerships



www.iConofSuccessGlobal.com

We are proud to have iCon of Success as a Cooperative Partner who shares their resources, facility and consulting services with us to assist our Clients in a diversity of ways.



www.CharlotteAreaFund.org

We are thankful for our growing relationship with the Charlotte Area Fund and we are planning cooperative initiatives with them as we evolve our services.



www.SafeAlliance.org

We are grateful for the cooperative relationship we have with Safe Alliance and are also planning cooperative initiatives with them as we grow into new services.



www.Self-Help.org

We are proud to be associated with Self-Help because they have been instrumental in helping us serve our Clients. Their services help our Clients create a solid foundation for their independence and long term goal achievement.

Expected End Ministries is on an ongoing mission to form mutually beneficial cooperative partnerships with other charities, non-profits and organizations with whom we can further develop our resource base and enhance the quality of the services and programs we deliver to our Clients. Our intentions are to "work in mutual benefit" with everyone who grants us the privilege of a cooperative partnership. While monetary and material resources are always in demand our ability to cooperate with others greatly increases the quality of services and programs we provide our Clients.



Getting Started

Thank you for reading this business presentation and we invite you to share it with anyone you feel will have an interest in what we are doing. There are three primary ways that you can "Get Started" with Expected End Ministries and we humbly beseech you to consider one or more of them.

MONETARY & MATERIAL SUPPORT: If you are an individual, business owner, company or corporation, agency, charity, non-profit, foundation or any other type of structure who would like to provide monetary and/or material support to Expected End Ministries we would like to thank you in advance for your contributions and/or donations. If you require us to submit a formal proposal please contact Ava Roseboro and we will gladly comply with your funding prerequisites.



COOPERATIVE PARTNERSHIP: Our ability to provide high quality services and programs to our Clients are greatly dependent upon the Cooperative Partnerships we form with other entities. If you offer any form of beneficial services and/or programs that you feel would be of benefit to our Clients then we welcome an invitation from you to partner with us.



CROSS PROMOTION: We would greatly appreciate your willingness to cross promote Expected End Ministries through an invitation to speak at your Church, Event or Facility to any audience type. In addition your kindness in sharing our website, videos, social media profiles and other collateral information or news about our non-profit initiatives, services and programs on your personal or business social media profiles is very much appreciated. News and media outlets are welcome to contact us for an interview or as a feature so that we can gain positive exposure within our community.



Your reply communications are very much appreciated and welcomed!

Sincerely,

Ava Roseboro, Founder and CEO

Bobby Roseboro, Vice president

Expected End Ministries

3228 Wicklow Place

Charlotte, NC 28205

Phone: 704-535-1593

Email: eeministries88@gmail.com

Website: www.ExpectedEndCharlotte.com